

**OVERVIEW OF CURRENT SITUATION (4/14/21 1021)** Source: Johns Hopkins University & Medicine <https://coronavirus.jhu.edu/map.html>

Cases / Deaths  
 Worldwide: 137,811,552 / 2,964,835  
 Nationwide: 31,375,111 / 563,873  
 California: 3,707,354 / 60,606  
 Orange Co: 252,627 / 4,862 Source: [Orange County COVID-19 Case Counts & Testing Figures](#)

**ORANGE COUNTY PUBLIC HEALTH (as of 4/14/21 0937)**

[Orange County COVID-19 Summary\\* click for full details](#)

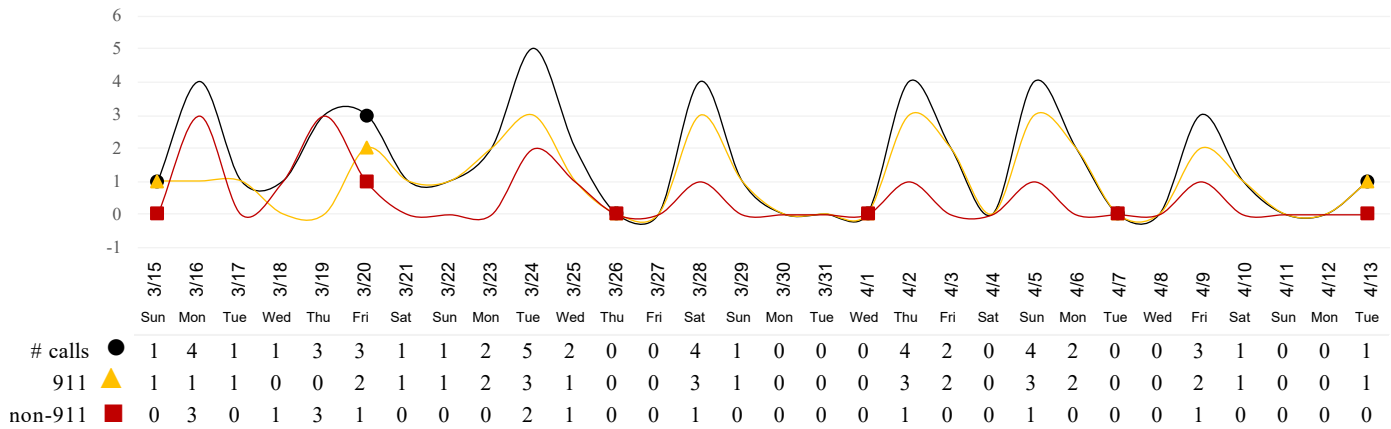
	Thu 4/8/21	Fri 4/9/21	Sat 4/10/21	Sun 4/11/21	Mon 4/12/21	Tues 4/13/21	Wed 4/14/21
Cases Reported to Date	251,611	251,698	252,120	252,316	252,436	252,538	252,627
Deaths Reported to Date	4,810	4,826	4,831	4,839	4,839	4,849	4,862
Tests Reported Today	13,998	12,911	15,183	8,622	6,288	10,355	13,143
Cumulative Tests to Date	3,428,287	3,441,198	3,456,381	3,465,003	3,471,291	3,481,646	3,494,789

\*Data posted is always preliminary & subject to change. More information may become available as individual case investigations are completed. **LOCAL DATA MAY BE DIFFERENT FROM THE STATE WEBSITE DATA.**

**SKILLED NURSING/ASSISTED LIVING/RESIDENTIAL CARE FACILITY – TRENDS**

\*Data Source: Orange County Medical Emergency Data System (OC-MEDS) – Updated 4/13/21

**Calls to SNFs/Congregate Living with Primary Impressions: Fever/Cough, Influenza-like Illnesses**  
 (Transports to ERCs Only - Last 30 Days)



3/17: Row headers for 911 and non-911 were switched to accurately reflect the item being reported. Total number of calls did not change.

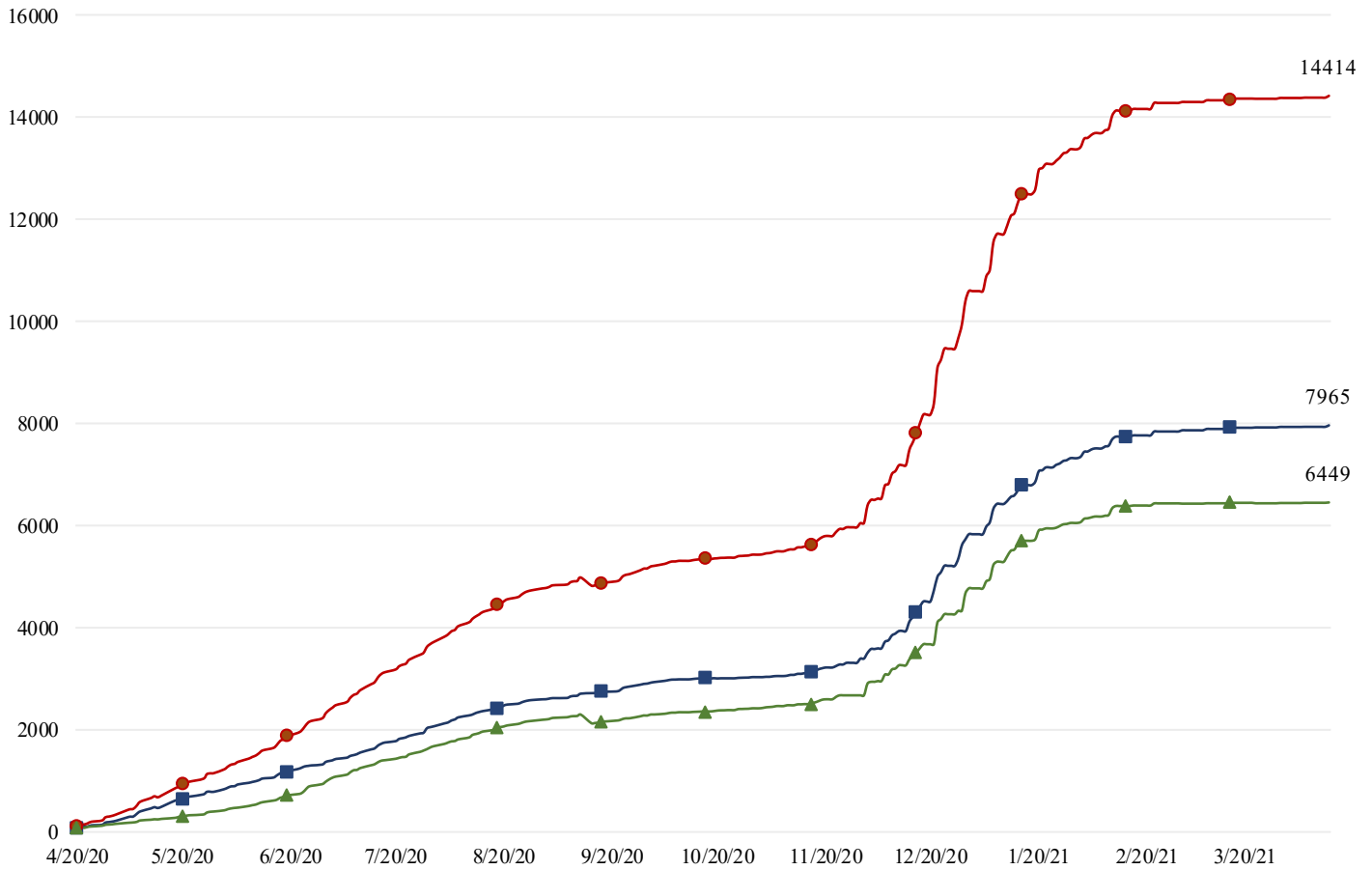
\*Data Source: California Department of Public Health (CDPH)

**Skilled Nursing/Assisted Living/Residential Care Facility PPE / Ventilator Supplies Days on Hand**  
 (69/73 SNFs reported)

Reporting Date: 4/13/2021	0 - 3 days	4 - 7 days	8-14 days	15+ days
N95 Masks	0	1	12	56
Surgical Masks	0	1	10	58
Eye Protection	0	1	11	57
Gowns	0	1	11	57
Gloves	0	2	10	57
Alcohol-Based Hand Sanitizer	0	1	11	57

\*Data Source: Orange County Health Care Agency – Public Health – 4/13/21

COVID+ in Congregate Healthcare\*



\*\*NOTE\*\*: Decrease in the COVID + in staff seen on graph is due to data being cleaned and removing duplicates of those that work in multiple OC facilities or are contract staff and care for residents at multiple facilities.

Resident COVID+ ■ Staff COVID+ ▲ Total ●

\*Data Source: Orange County Health Care Agency – Public Health

Current Facility Outbreaks (as of 4/13/21 1000)

An "Outbreak" is two (2) or more confirmed cases of COVID-19 in facility occurring within 14 days.

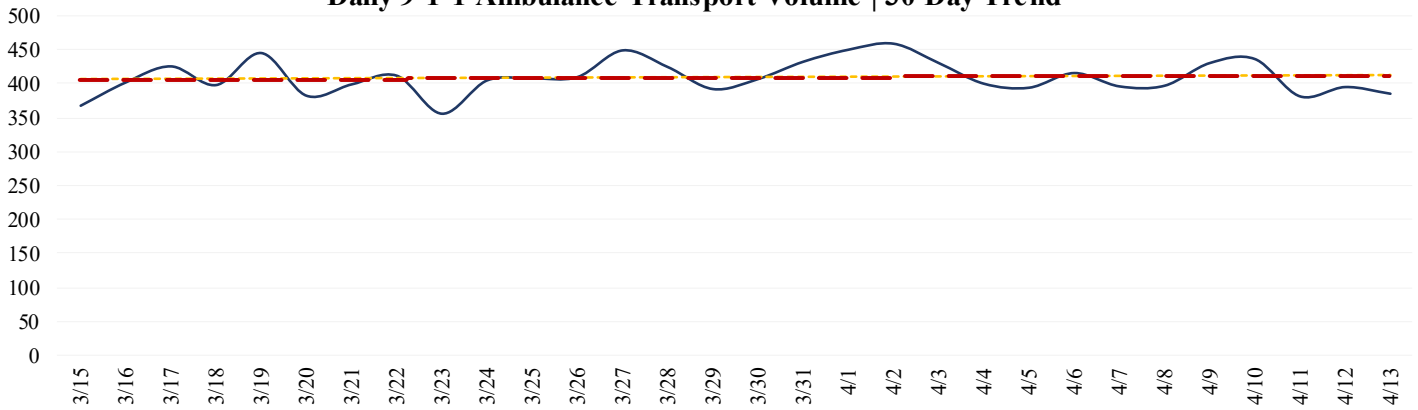
Facility Type by Licensing Category, Count	Facility Name Alphabetical
Skilled Nursing Facility 0	
Elderly Assisted Living 0	

**EMERGENCY MEDICAL SERVICES STATUS**

\*Data Source: Orange County Medical Emergency Data System (OC-MEDS)

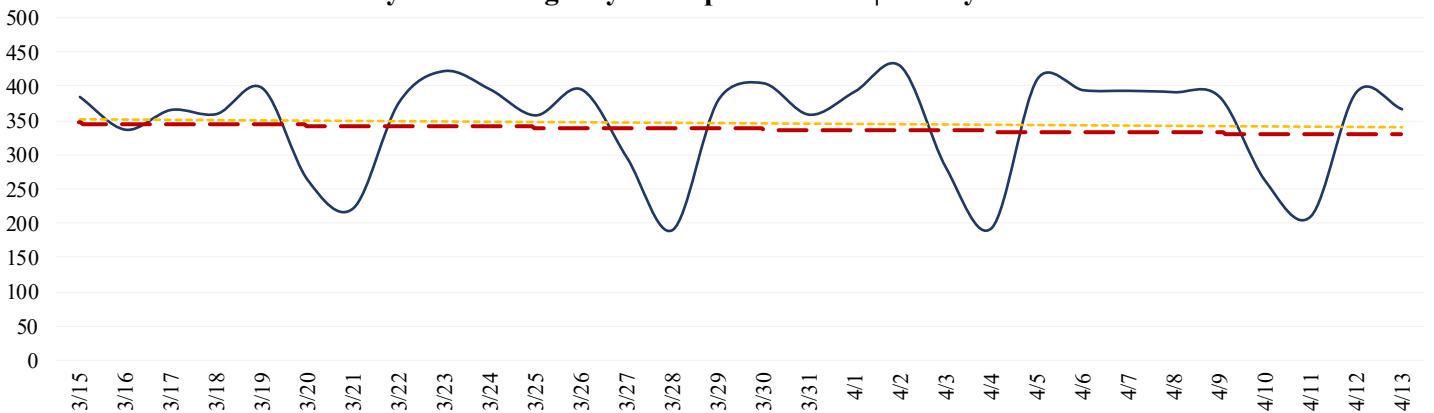
9-1-1 ambulance transport volume **has been trending up over the last few weeks**. Volume continues to average about **5-10% below normal** (pre-COVID) levels (Updated 04/14/21).

**Daily 9-1-1 Ambulance Transport Volume | 30 Day Trend**

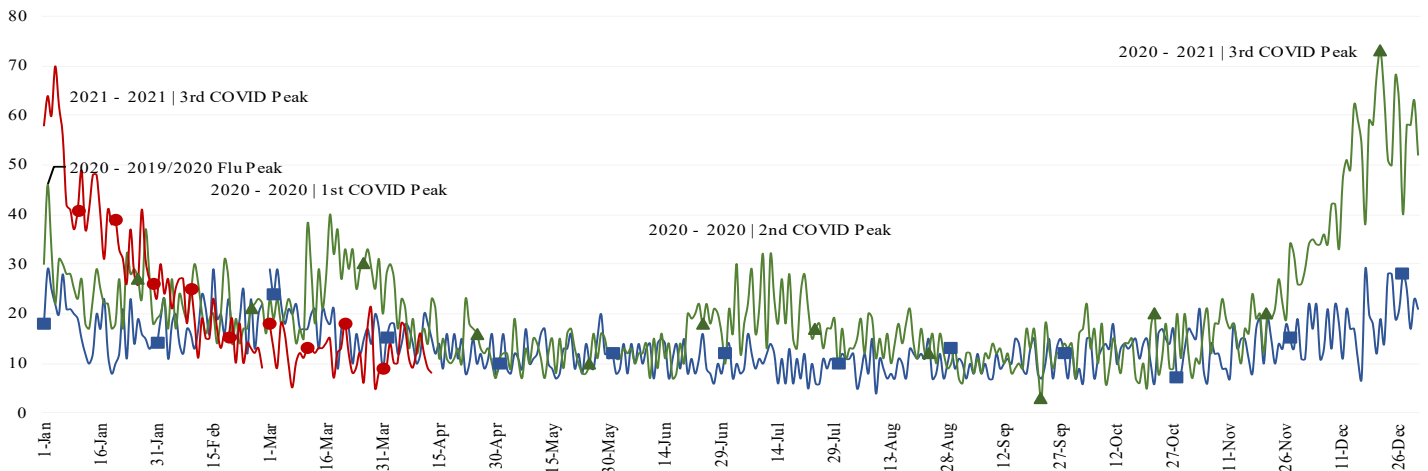


Non-emergency ambulance transports **have remained steady** over the last few weeks. Transport volume **continues to average about 30%** below normal (pre-COVID) levels overall (Updated 04/14/21).

**Daily Non-Emergency Transport Volume | 30 Day Trend**



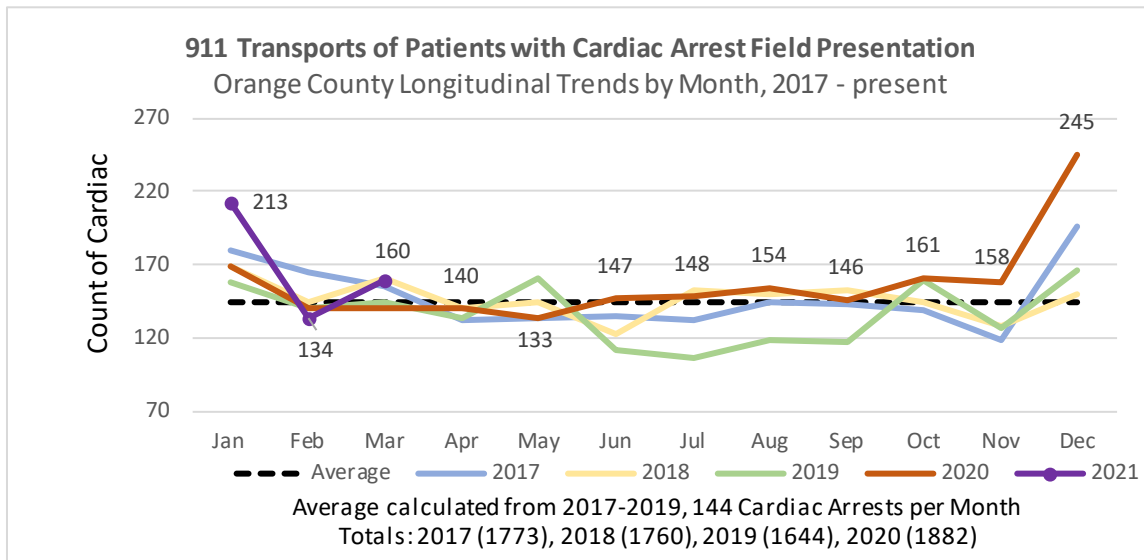
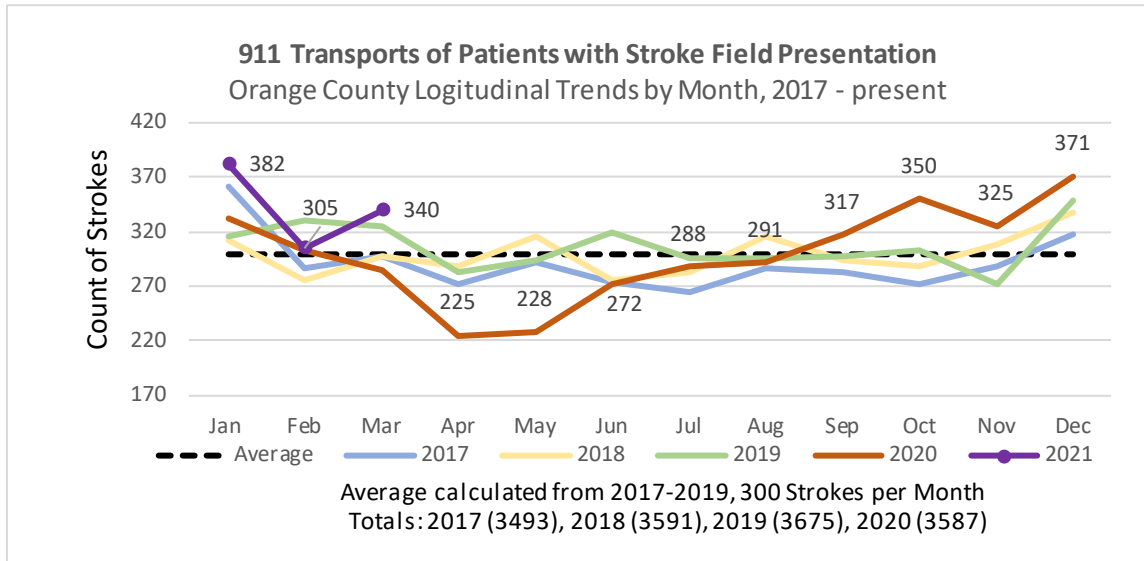
Primary Impressions of Cold/Flu/ILI by 9-1-1 EMS **have decreased slightly over the last week, but continue to be near normal baseline levels** for this time of year. (Updated 04/14/21).

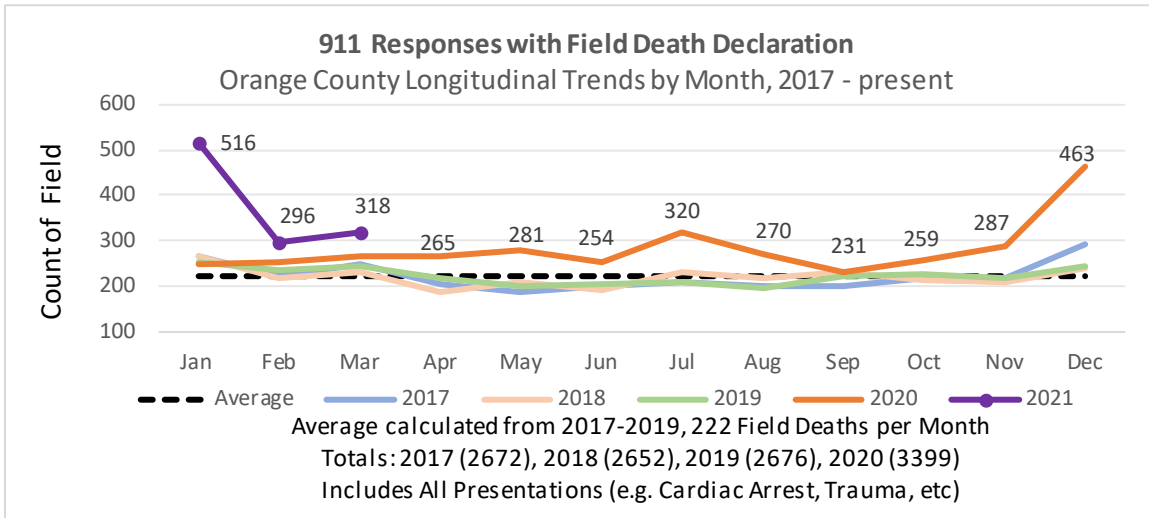


**EMS Provider Impressions - Cold/Flu/ILI/COVID-19 Year Over Year Comparison (2019 ■, 2020 ▲, & 2021 ●)**

**911 EMS SYSTEM MONITORING**

\*Data Source: Orange County Medical Emergency Data System (OC-MEDS)





**Summary Data Table for Chart, “911 Responses with Field Death Declaration”**

	2017	2018	2019	2020	2021
January	268	267	254	250	516
February	224	216	235	254	296
March	248	233	245	265	318
April	206	186	220	265	
May	186	210	202	281	
June	201	190	205	254	
July	211	233	208	320	
August	201	218	195	270	
September	199	233	222	231	
October	217	213	227	259	
November	217	211	217	287	
December	294	242	246	463	
<b>Total</b>	<b>2378</b>	<b>2410</b>	<b>2430</b>	<b>3399</b>	

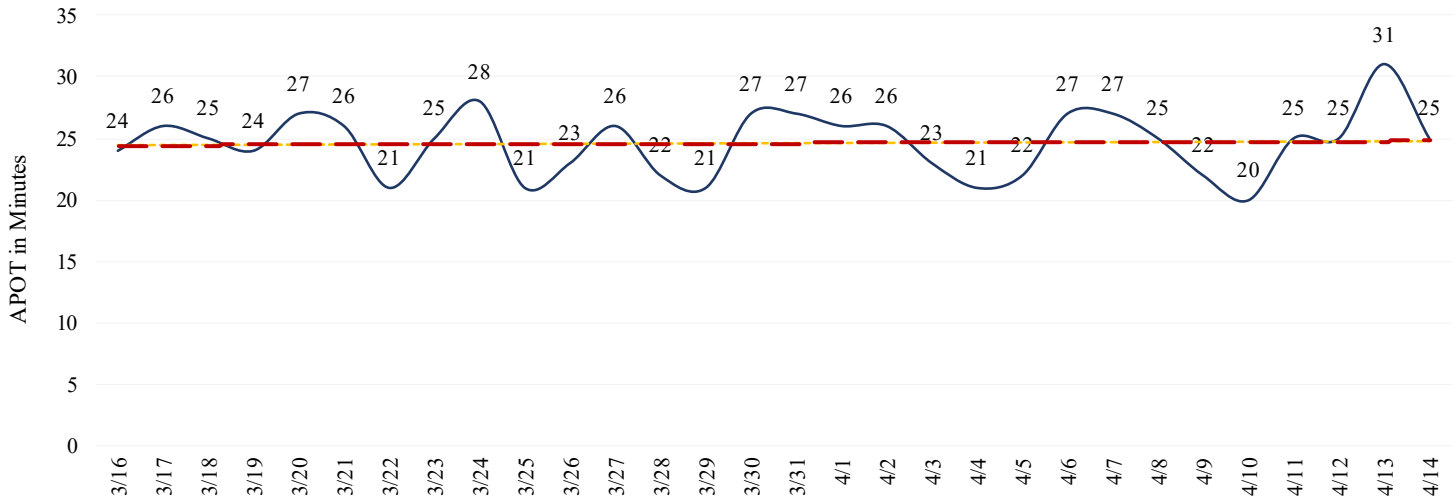
- Ambulance Patient Offload Time (APOT) is defined as the time the ambulance arrives at the receiving destination (wheels stop) to the time that the ambulance crew physically transfers the patient to the ED gurney. Last 24 hours: **Current Average APOT is: 12m58s / Current 90th Percentile APOT is: 25m18s**

- Five (5) ERCs had APOT times greater than thirty (30) minutes.
- Two (2) ERCs had APOT times greater than sixty (60) minutes.

The chart below displays a daily trend over the last 30 days.

\*Data Source: Orange County Medical Emergency Data System (OC-MEDS) – Updated 4/14/21

**COVID 19 - APOT 90th percentile | Daily Trend**

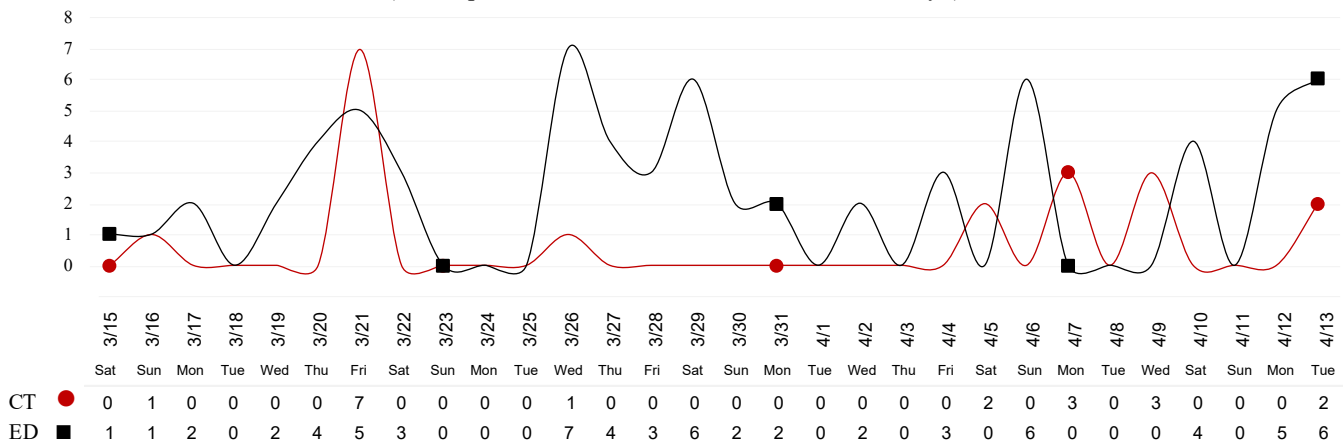


Note: a handful of ERCs were close to the 30 minute threshold, but were not over it.

- Emergency Department (ED) Diversion & Computerized Tomography (CT) (ED closed to all ambulance transport due to no ED capacity or no CT available) for the last 30 days.
- NOTE: Suspension of Hospital Diversion was reinstated, 1/4/21, @ 1900.**
- NOTE: Hospital Diversion was reinstated on 1/25/21 @ 1900.**

\*Data Source: Orange County Medical Emergency Data System (OC-MEDS) – Updated 4/13/21

**Hours of Diversion per 24-Hour Period**  
 (25 Hospitals, rounded to nearest hour - Last 30 Days)



04/14/21

26): Anaheim Regional, Anaheim Global, Chapman Global, CHOC, CHOC at Mission, Foothill, Fountain Valley, Garden Grove, Hoag-Irvine, Hoag-Newport Beach, Huntington Beach, Kaiser-Anaheim, Kaiser-Irvine, La Palma, Los Alamitos, Mission-Laguna Beach, Mission-Mission Viejo, Orange Coast Memorial, Orange County Global, Placentia Linda, Saddleback Memorial, Saint Jude, South Coast Global, St. Josephs, UCI, West Anaheim

\*Data Source: California Department of Public Health (CDPH) – Snowflake server  
 Current Snowflake Data Dictionary may be found at:

[https://www.calhospital.org/sites/main/files/file-attachments/data\\_dictionary\\_cha\\_covid\\_tracker\\_4-17-20.pdf](https://www.calhospital.org/sites/main/files/file-attachments/data_dictionary_cha_covid_tracker_4-17-20.pdf)

**33 HOSPITALS**

Date	Census All System	Occupancy % System	COVID+ Hospitalized System	COVID+ Hospitalized ICU Only (Adult & Peds)	% COVID+ hospitalized of ICU Occupied (Adult & Peds)	ICU Occupied (Adult & Peds)**	ICU Available (Adult & Peds)***	% ICU Available (Adult & Peds)****	ICU by Patient Age Group						% Ventilators Available
									Adult Occupied	Adult Available	Adult % Available	Pediatric Occupied	Pediatric Available	Pediatric % Available	
3/31	3528	67%	131	22	5%	409	254	38%	380	216	36%	29	38	57%	72%
4/1	3528	67%	118	23	6%	416	251	38%	396	204	34%	20	47	70%	72%
4/2	3565	68%	109	23	6%	412	255	38%	393	207	35%	19	48	72%	72%
4/3	3522	68%	115	22	5%	425	246	37%	399	205	34%	26	41	61%	72%
4/4	3451	66%	109	16	4%	401	269	40%	377	226	37%	24	43	64%	72%
4/5	3355	65%	107	23	6%	405	262	39%	380	220	37%	25	42	63%	71%
4/6	3463	67%	114	29	7%	424	260	38%	400	217	35%	24	43	64%	71%
4/7	3533	67%	113	28	6%	431	240	36%	406	198	33%	25	42	63%	70%
4/8	3686	70%	114	32	7%	429	251	37%	407	204	33%	22	47	68%	72%
4/9	3702	69%	125	33	8%	425	258	38%	398	216	35%	27	42	61%	72%
4/10	3419	66%	124	25	6%	406	253	38%	384	208	35%	22	45	67%	71%
4/11	3307	64%	120	29	7%	410	251	38%	390	204	34%	20	47	70%	70%
4/12	3226	63%	115	31	8%	412	267	39%	393	219	36%	19	48	72%	71%
4/13	3357	65%	122	30	7%	413	262	39%	390	218	36%	23	44	66%	70%

\*\*ICU occupied PREVIOUSLY ICU CDPH OC Occupied – CDPH combines occupied ICU adult beds and occupied ICU pediatric beds as a reporting metric on their COVID-19 Hospital dashboard. \*\*\*ICU Available PREVIOUSLY ICU CDPH OC Available – CDPH subtracts the sum of occupied ICU adult beds and occupied ICU pediatric beds, from the sum of ICU total adult beds and ICU total pediatric beds to determine ICU available beds on their COVID-19 Hospital dashboard. \*\*\*\*%ICU AVAILABLE PREVIOUSLY % ICU CDPH OC Available – The sum of occupied ICU adult beds and occupied ICU pediatric beds, divided by the sum of ICU total adult beds and ICU total pediatric beds, as a percentage. \*\*\*\*\*%COVID+ hospitalized of ICU Occupied PREVIOUSLY % ICU Beds System Available – All ICU beds reported as available in Orange County, which includes Adult, PICU, and NICU, and any other ICU bed types.

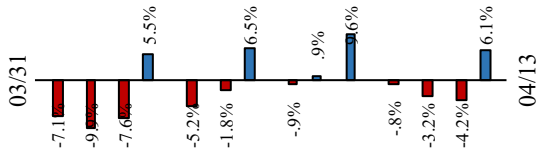
04/14/21

**COVID 19 ORANGE COUNTY HOSPITAL SYSTEM DATA (CA SNOWFLAKE SERVER)**

**COVID+ CENSUS by BED TYPE | 04/13/2021**

▲ ICU	30	-1	-3.2%	▼
◆ ED OVERFLOW	7	+5	250.0%	▲
X NON-ICU	92	+8	9.5%	▲
● SYSTEM	122	+7	6.1%	▲
3 Day   04-10-21	124	-2	-1.6%	
7 Day   04-06-21	114	+8	7.0%	

**14 Day System COVID+ Change**



**ICU SYSTEM CENSUS | (04/13/21)**

\*includes adult, PICU, NICU & other

● SYSTEM - 968

▲ AVAILABLE - 416 (43.0%)



X OCCUPIED - 552 (57.0%)



**VENTILATORS | (04/13/21)**

● SYSTEM - 1144

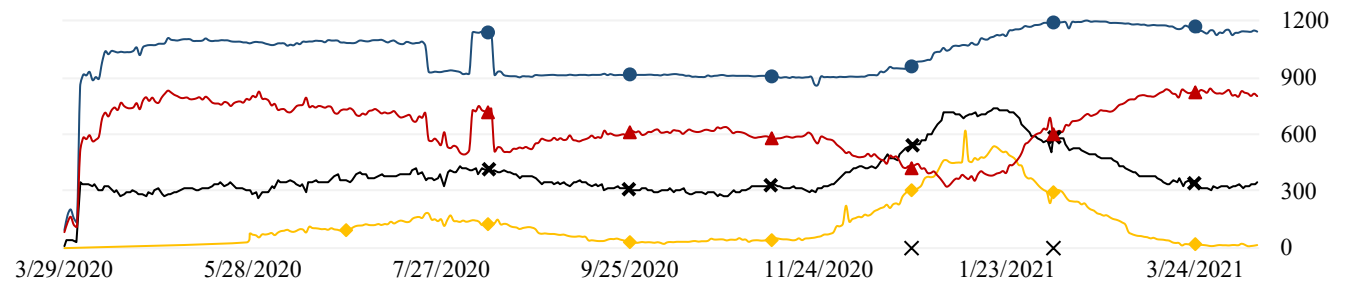
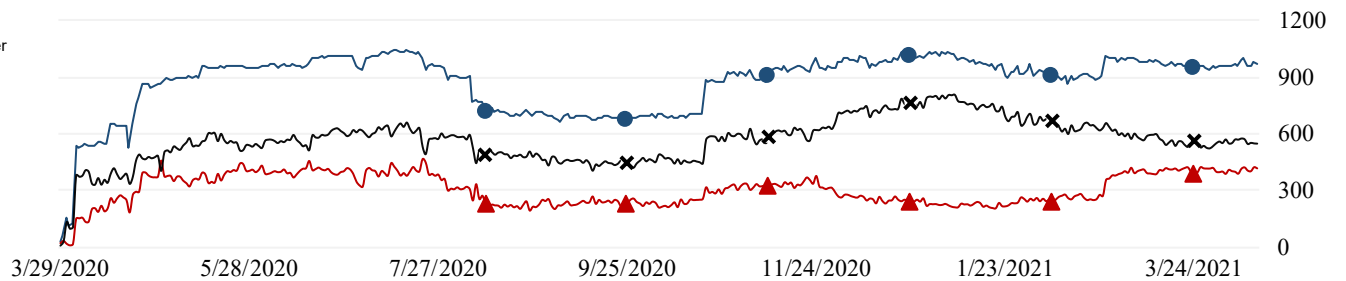
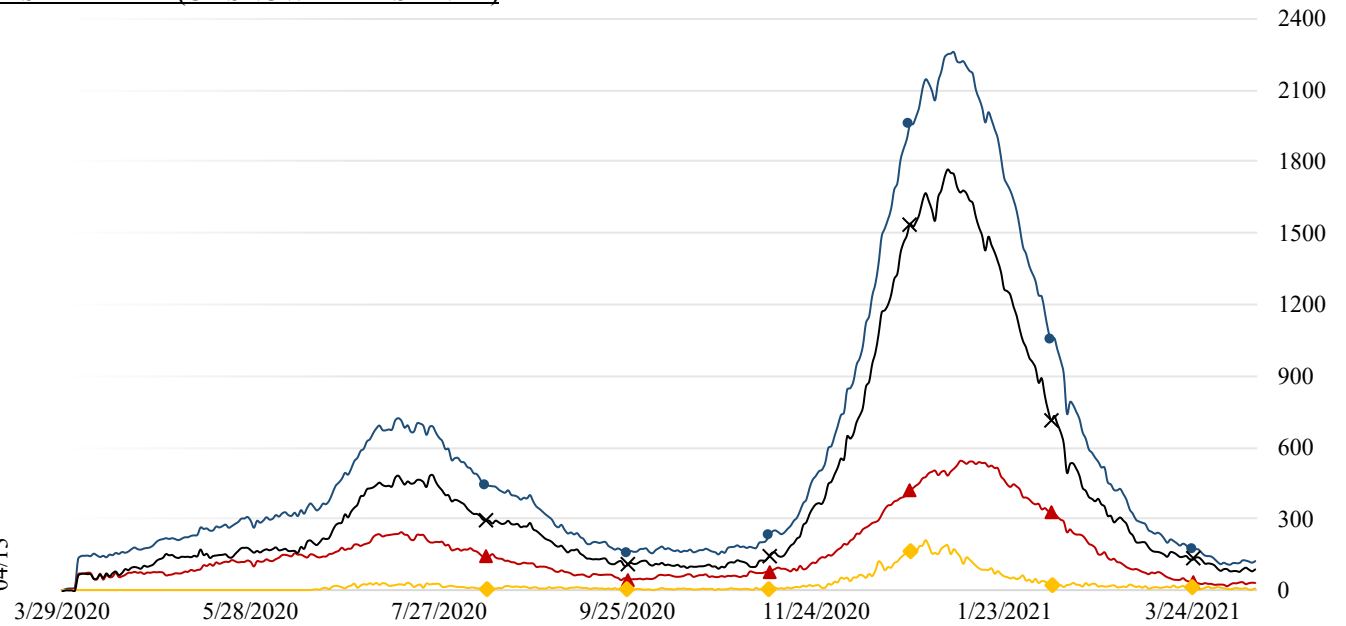
▲ AVAILABLE - 801 (70.0%)



X OCCUPIED - 343 (30.0%)



◆ COVID - 16 (4.7%) \*0 FROM ED





04/14/21

**COVID 19 ORANGE COUNTY HOSPITAL SYSTEM DATA (CA SNOWFLAKE SERVER)**

**7 DAY HISTORY BED OCCUPANCY | 04/13/2021**

● SYSTEM BEDS (INCLUDES SURGE)- 6801

◆ INPATIENT INCLUDING SURGE- 3421 (50.3%)

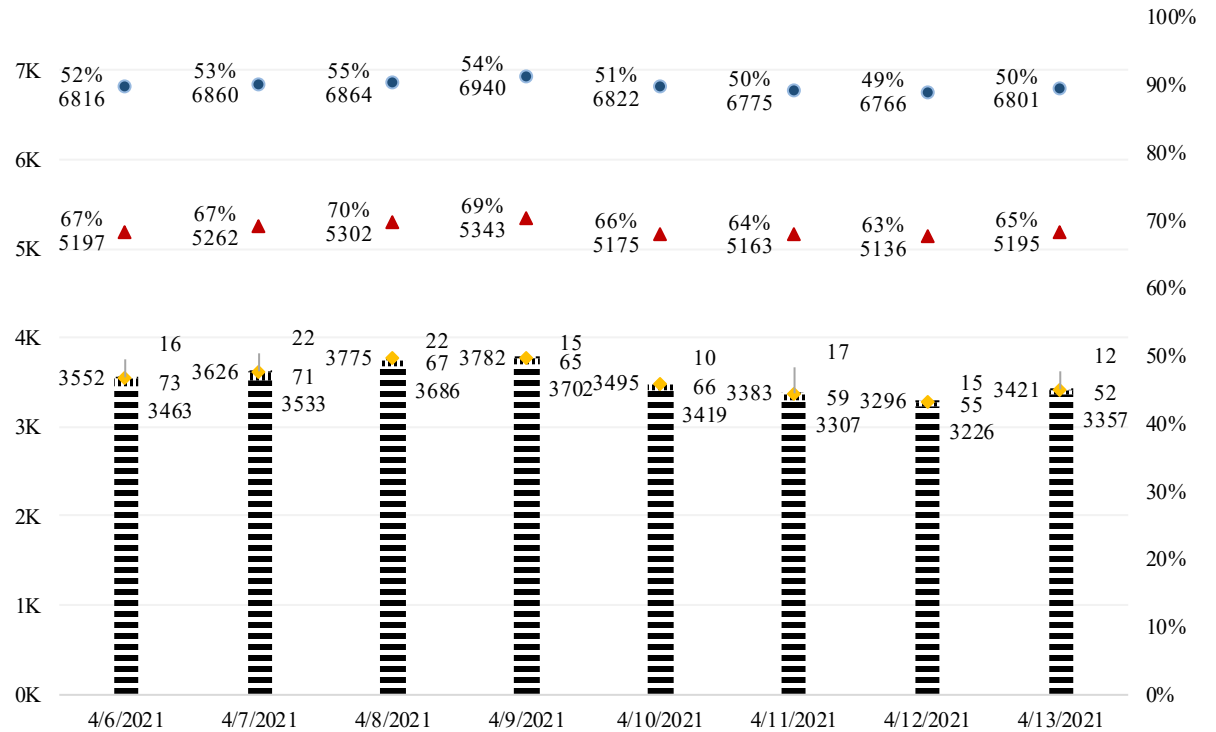


|||| SURGE NON ICU INPATIENT- 52

▨ SURGE ICU INPATIENT- 12

▲ NON SURGE INPATIENT BEDS- 5195

▨▨▨ NON SURGE INPATIENT- 3357 (64.6%)



**SURGE CENSUS | 04/13/2021**

● SURGE BED SYSTEM- 1042 (ICU- 134 | NON ICU- 908)

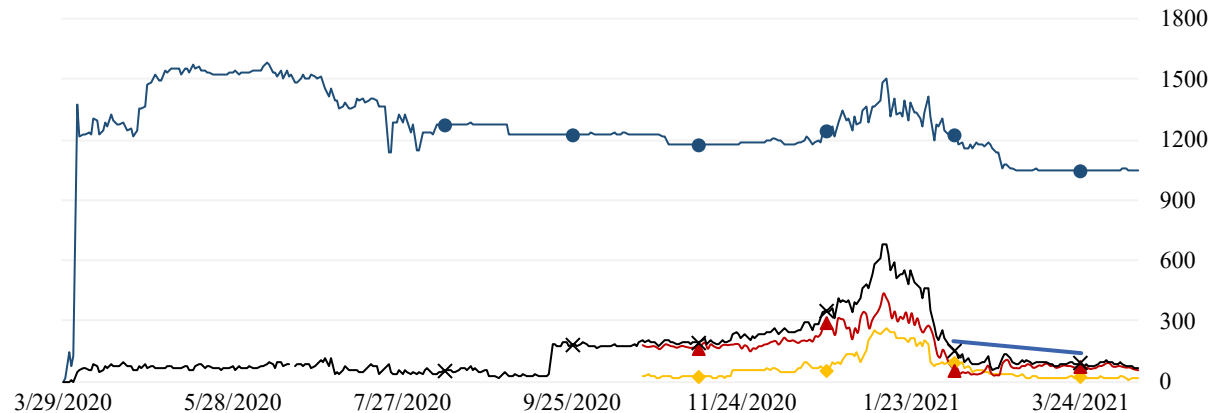
X SURGE BED PATIENTS SYSTEM- 64 (6.1%)



▲ SURGE BED NON ICU PATIENTS- 52 (5.7%)



◆ SURGE BED ICU PATIENTS- 12 (9.0%)



04/14/21

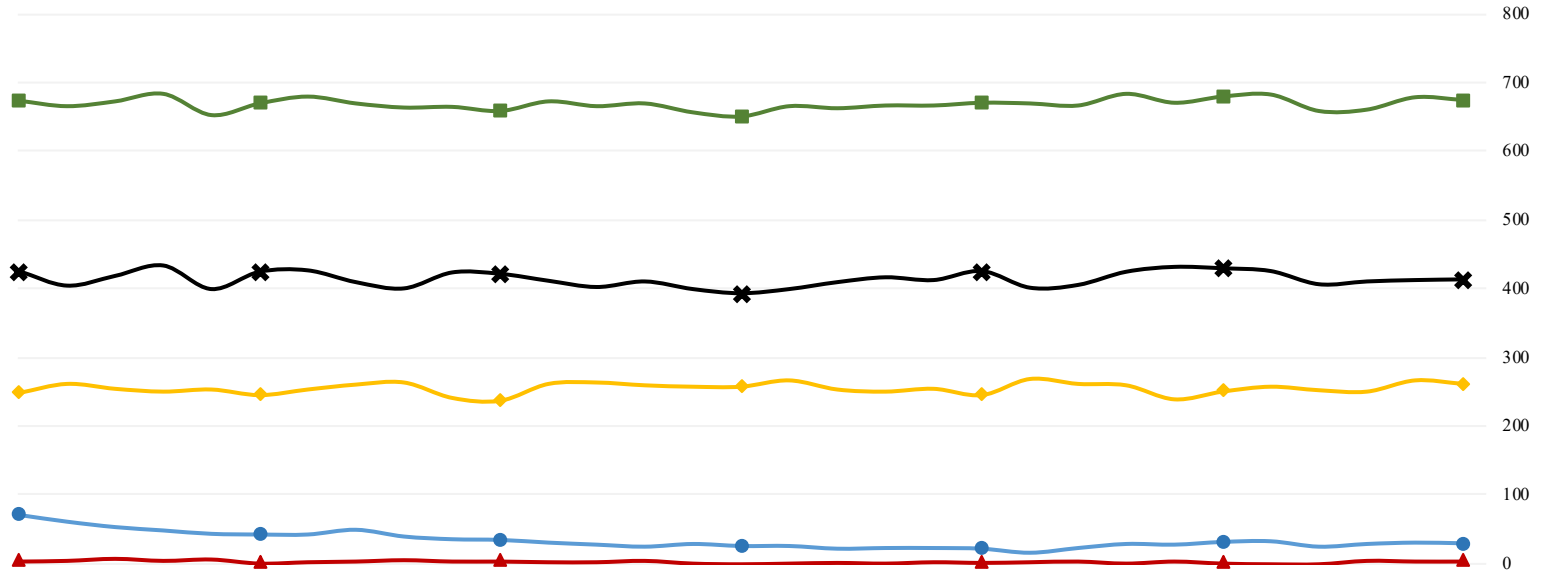
**COVID 19 ORANGE COUNTY HOSPITAL SYSTEM DATA (CA SNOWFLAKE SERVER)**

**NON SURGE ICU BEDS: ADULT & Peds COMBINED (03/15/21 - 04/13/21) | 33 ACUTE CARE FACILITIES REPORTING**

**ICU INSIGHTS**

03-15-21 thru 04-13-21:

- Confirmed COVID+ in ICU decreased by -51.6%
- ▲ Confirmed suspect in ICU decreased by -20.0%
- ✕ Occupied ICU increased by 2.2%
- ◆ Available ICU had no change at 0.0%
- System ICU increased by 1.4%



	3-15-21	3-16-21	3-17-21	3-18-21	3-19-21	3-20-21	3-21-21	3-22-21	3-23-21	3-24-21	3-25-21	3-26-21	3-27-21	3-28-21	3-29-21	3-30-21	3-31-21	4-1-21	4-2-21	4-3-21	4-4-21	4-5-21	4-6-21	4-7-21	4-8-21	4-9-21	4-10-21	4-11-21	4-12-21	4-13-21
<b>● CONFIRMED</b>	62	54	49	44	43	43	50	40	36	35	31	28	25	29	26	26	22	23	23	22	16	23	29	28	32	33	25	29	31	30
<i>Adult</i>	62	54	49	44	43	43	50	40	36	35	31	28	25	29	25	26	22	22	23	22	16	23	29	28	32	33	25	29	31	30
<i>Peds</i>	0	0	0	0	0	0	0	0	0	0	0	0	0	0	1	0	0	1	0	0	0	0	0	0	0	0	0	0	0	0
<b>▲ SUSPECTED</b>	5	8	5	7	1	3	4	6	4	4	3	3	5	1	0	1	2	1	3	2	3	4	1	4	1	0	0	5	4	4
<i>Adult</i>	5	7	5	7	1	3	4	6	4	4	3	3	5	1	0	1	2	1	3	2	3	4	1	4	1	0	0	5	4	4
<i>Peds</i>	0	1	0	0	0	0	0	0	0	0	0	0	0	0	0	0	0	0	0	0	0	0	0	0	0	0	0	0	0	0
<b>✕ OCCUPIED</b>	404	418	433	399	424	426	409	400	423	421	411	402	410	399	393	399	409	416	412	425	401	405	424	431	429	425	406	410	412	413
<i>Adult</i>	379	391	399	373	400	402	387	378	395	397	386	381	389	376	372	376	380	396	393	399	377	380	400	406	407	398	384	390	393	390
<i>Peds</i>	25	27	34	26	24	24	22	22	28	24	25	21	21	23	21	23	29	20	19	26	24	25	24	25	22	27	22	20	19	23
<b>◆ SYSTEM AVL</b>	262	255	251	254	246	254	261	264	242	238	262	264	260	258	258	267	254	251	255	246	269	262	260	240	251	258	253	251	267	262
<i>Adult</i>	220	215	218	213	203	211	216	219	203	195	220	218	214	214	212	223	216	204	207	205	226	220	217	198	204	216	208	204	219	218
<i>Peds</i>	42	40	33	41	43	43	45	45	39	43	42	46	46	44	46	44	38	47	48	41	43	42	43	42	47	42	45	47	44	
<b>■ SYSTEM TTL</b>	666	673	684	653	670	680	670	664	665	659	673	666	670	657	651	666	663	667	667	671	670	667	684	671	680	683	659	661	679	675
<i>Adult</i>	599	606	617	586	603	613	603	597	598	592	606	599	603	590	584	599	596	600	600	604	603	600	617	604	611	614	592	594	612	608
<i>Peds</i>	67	67	67	67	67	67	67	67	67	67	67	67	67	67	67	67	67	67	67	67	67	67	67	67	69	69	67	67	67	67

04/14/21

**COVID 19 ORANGE COUNTY HOSPITAL SYSTEM DATA (CA SNOWFLAKE SERVER)**

**VENTILATORS (03/15/21 - 04/13/21) | 33 ACUTE CARE FACILITIES REPORTING**

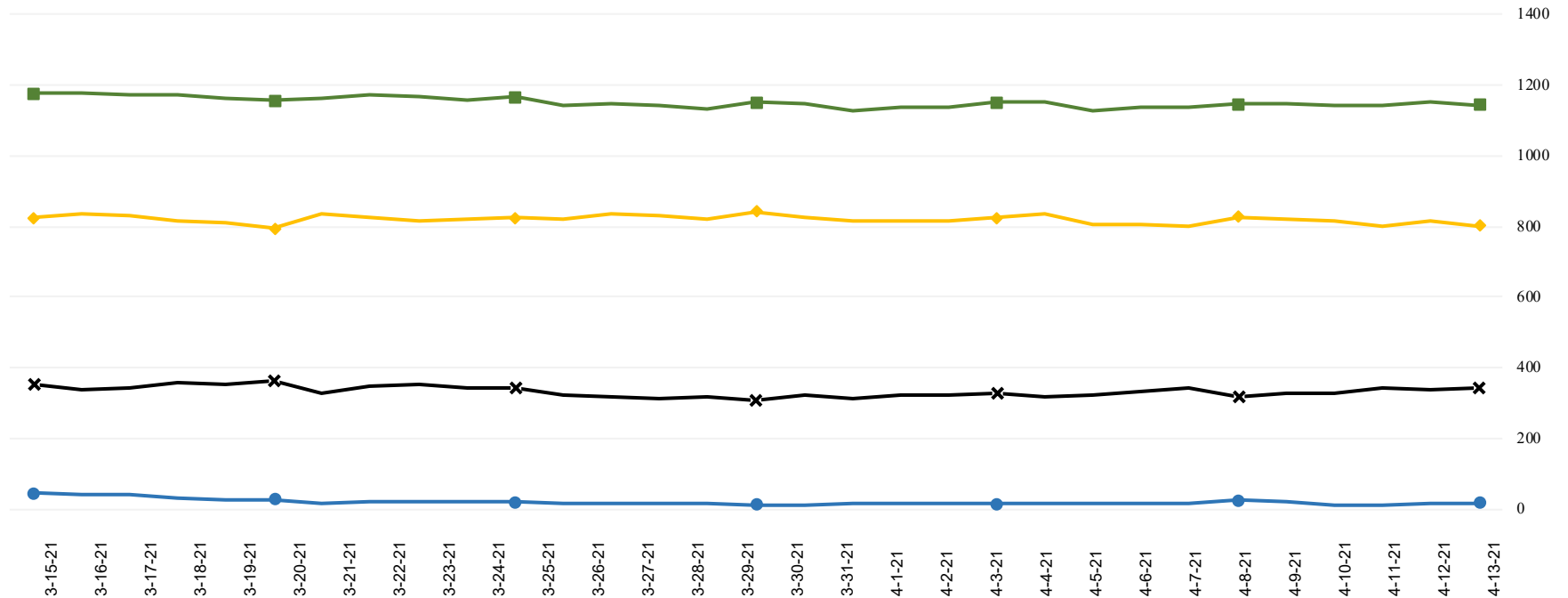
**VENTILATOR INSIGHTS**  
03-15-21 thru 04-13-21:

● Confirmed COVID+ patients on ventilators decreased by -61.0%

✕ Occupied ventilators increased by 1.2%

◆ System available ventilators decreased by -4.3%

■ Total system ventilators decreased by -2.7%



	3-15-21	3-16-21	3-17-21	3-18-21	3-19-21	3-20-21	3-21-21	3-22-21	3-23-21	3-24-21	3-25-21	3-26-21	3-27-21	3-28-21	3-29-21	3-30-21	3-31-21	4-1-21	4-2-21	4-3-21	4-4-21	4-5-21	4-6-21	4-7-21	4-8-21	4-9-21	4-10-21	4-11-21	4-12-21	4-13-21
● CONFIRMED*	41	39	30	27	27	14	21	20	19	18	16	17	16	14	11	11	14	16	15	15	14	16	16	15	23	18	10	11	13	16
✕ OCCUPIED	339	340	356	350	363	326	348	353	340	343	322	316	313	315	309	324	311	323	323	327	319	321	330	340	318	326	329	341	336	343
◆ SYSTEM AVL	837	831	815	811	794	835	827	817	819	824	819	833	828	819	841	825	815	816	814	825	833	805	807	798	827	819	815	802	814	801
■ SYSTEM TTL	1176	1171	1171	1161	1157	1161	1175	1170	1159	1167	1141	1149	1141	1134	1150	1149	1126	1139	1137	1152	1152	1126	1137	1138	1145	1145	1144	1143	1150	1144

\*Confirmed includes ED values

\*Data Source: California Department of Public Health (CDPH) – Snowflake server

\*\*Current Snowflake Data Dictionary may be found at:

[https://www.calhospital.org/sites/main/files/file-attachments/data\\_dictionary\\_cha\\_covid\\_tracker\\_4-17-20.pdf](https://www.calhospital.org/sites/main/files/file-attachments/data_dictionary_cha_covid_tracker_4-17-20.pdf)

**Acute Care Hospital PPE / Ventilator Supplies Days on Hand – (31/33 ACHs reported)**

Reporting Date: 04/13/21*	30 days +	15-30 days	7-14 days	4-6 days	0-3 days	Not Reported
Ventilator Supplies**	8	6	14	2	1	2
N95 Masks**	23	5	3	0	0	2
Surgical Masks**	26	4	1	0	0	2
Face Shields**	22	5	3	1	0	2
Gloves**	18	5	8	0	0	2
Gowns**	19	9	3	0	0	2

**Hospital Criteria for shifting to Crisis Care Strategies**

**LEGEND**

**STATUS**

CRITERIA	STATUS		
	Normal Operations	Modified Operations	Modified Operations Assistance Needed
Rate of change in Hospitalized COVID-19 patients (doubling time over last 7 days)	Never to 4 weeks to double	4 weeks to 2 weeks to double	Less than 2 weeks to double
Absolute COVID-19 Census in the hospitals across Orange County	Less than 750	750-1500	>1500
Hospital census as a percentage of staffed capacity	<80%	80% to 90%	>90%
Hospital ICU census as a percentage of staffed ICU capacity	<70%	70% to 85%	>85%

**Hospital Criteria for shifting to Crisis Care Strategies**

**04/13/21**

**STATUS**

CRITERIA	STATUS		
	Normal Operations	Modified Operations Under Control	Modified Operations Assistance Needed
Rate of change in Hospitalized COVID-19 patients (doubling time over last 7 days)	1.14		
Absolute COVID-19 Census in the hospitals across Orange County	122		
Hospital census as a percentage of staffed capacity	65%		
Hospital ICU census as a percentage of staffed ICU capacity	61%		

**AGENCY OPERATIONS CENTER / LOGISTICS SECTION**

- The AOC is activated on **Wednesdays from 0900-1600 at Level II**; Warehouse Ops are M-F - 0900-1600.
- SCARCE Resources: Gloves, Syringes, Needles

**Total Activity – Updated 4/7/21 at 1530**

<b>INQUIRIES</b>	<b>RR RECEIVED</b>	<b>RR FILLED</b>
18,987 <b>+104</b>	11,373 <b>+124</b>	9,291 <b>+112</b>
Total Denied Requests: <b>895</b> / Total Redacted Requests: <b>964</b>		

**Inventory Report 02/18/20 to 04/13/21**

**Logistics Daily Units Distributed 4/7/21**

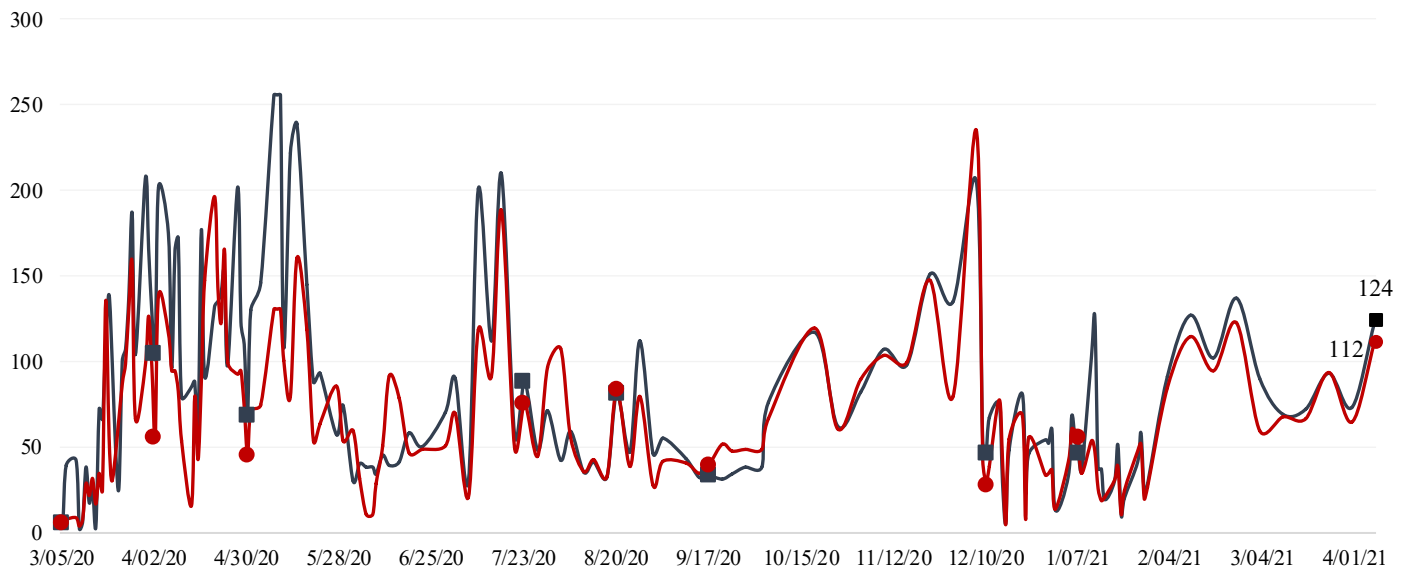
N95 Mask	16,040
Surgical Mask	26,500
Gown	2,800
Gloves	235,100
Face Shields/Eye Protection	600
Hand Sanitizer	636
Other	73,382
<b>Total Units</b>	<b>355,058</b>

**Medical Supply/Equipment Total Units Distributed**

N95 Mask	5,268,155
Surgical Mask	2,196,955
Gowns	2,979,766
PPE-Suit	17,965
Gloves	8,628,870
Eye Protection	425,408
Hand Sanitizer	319,627
Other Items	3,613,315
<b>Total Units</b>	<b>23,450,061</b>

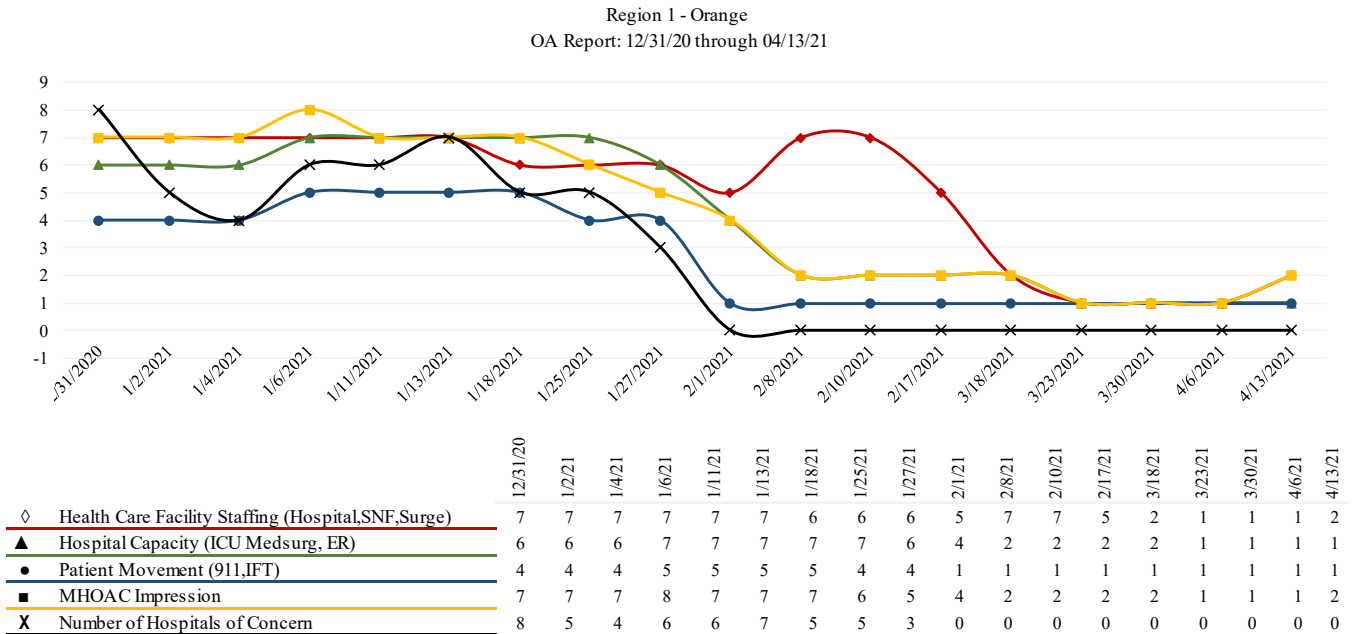
**Resource Requests - Updated 4/7/21 at 1530**

Received ■ Filled ●



**MHOAC IMPRESSION REPORT TO CDPH**

- The MHOAC provides a weekly “temperature check” report to CDPH which is an impression of the current status of the local medical/health system in several key areas.
- The results of these reports have been tracked and trended over time and are included below.



**ALTERNATE CARE SITE (ACS)**

- Fairview Alternate Care Site (FACS) opened for admissions on **TUESDAY, 12/15/20 @ 1800**
- **FACS was placed into a “warm close” status on MONDAY, 03/15/2021.** A “warm close” will allow the State of California to maintain the ACS in a semi-ready state and will enable the site to reopen within 72 hours if needed.

Fairview (COVID-19 +)		
Patient Census (as of 3/13/2021 09:00)	CURRENT	TOTAL
Orange County	0	140
LA County	0	71
Riverside	0	6
San Bernardino County	0	4
Ventura County	0	1
<b>Total patients CENSUS / TOTAL ACCEPTED</b>	<b>0</b>	<b>222</b>
<b>Patients Discharged</b>		<b>TOTAL</b>
<b>DISCHARGED</b>		<b>222</b>
<b>Memory Care Unit (MCU) Census (as of 3/2/2021 17:00)</b>		
MCU Patient Census	5	50
<b>Patients Discharged from MCU</b>		<b>TOTAL</b>
<b>MCU - DISCHARGED</b>		<b>45</b>

**MOBILE FIELD HOSPITALS (MFHs)**

- MFHs are capable of expanding current hospital capacity by adding additional patient beds.
- They are large heavy duty canvas tents with hard flooring and temperature controlled units.
- They can be configured in a myriad of footprints and sizes (i.e. 25-200 patient bed).
- OCEMS has a total of 8 trailers to support at minimum, 200 patient beds.
- CDPH is primed and ready to provide hospitals a waiver to allow emergency use of these MFHs.
  - Hospitals who have self-identified in receiving a MFH include:

- UCI (50 patient bed) – currently used for patient care activities
- Fountain Valley (25 patient bed) – converted to community vaccination clinic facility
- Los Alamitos (25 patient bed) – demobilized
- Saint Jude (50 patient bed) – demobilized

